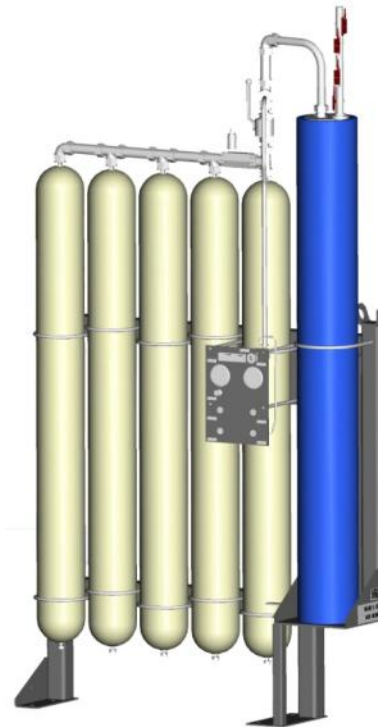


BSD ACCUMULATOR DESIGN VERSIONS



▪ Accumulator unit
basic design



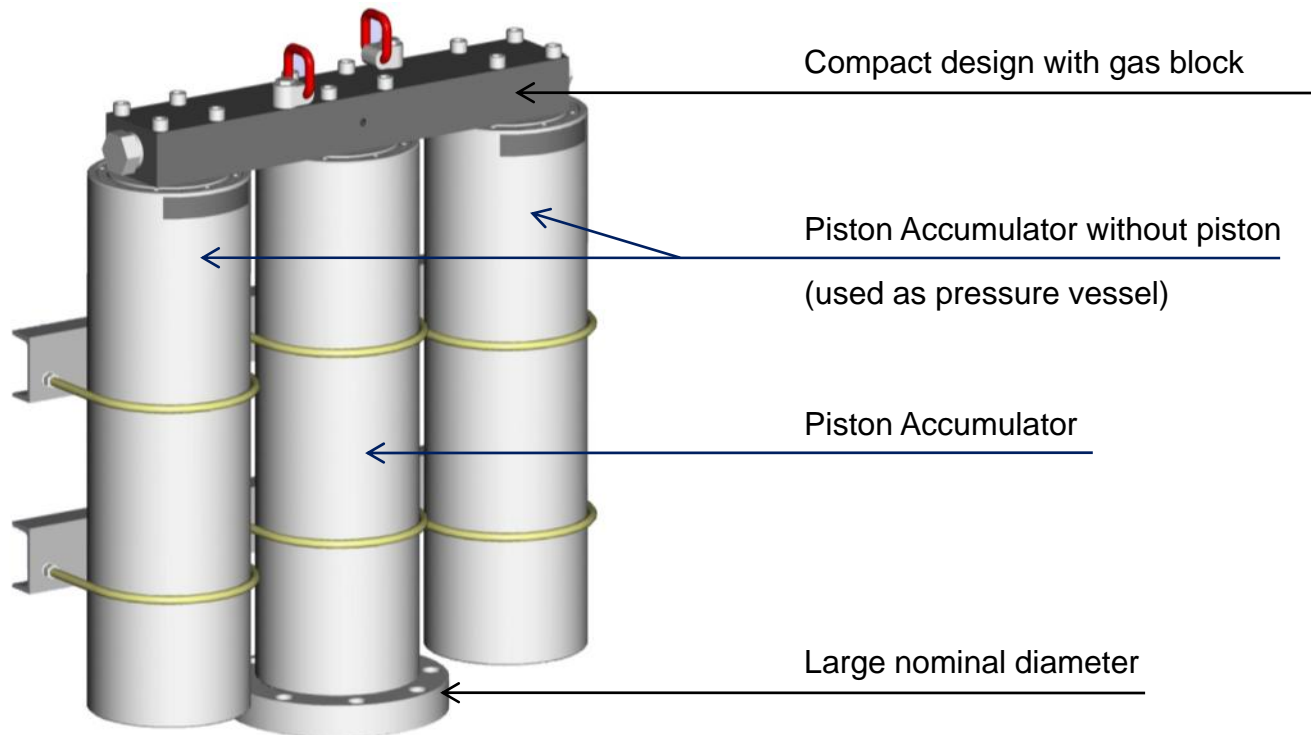
▪ Accumulator unit
standard design



▪ Accumulator unit
modular design



BSD ACCUMULATOR UNIT BASIC DESIGN



BSD ACCUMULATOR UNIT BASIC DESIGN



BSD Piston Accumulator

1 x AK 35-220-25

BSD Pressure Vessel

2 x DBAK 58-220-25

design pressure

dimension (l x w x h)

weight

Oil volume: total: 35 L

Gas volume: total: 116 L

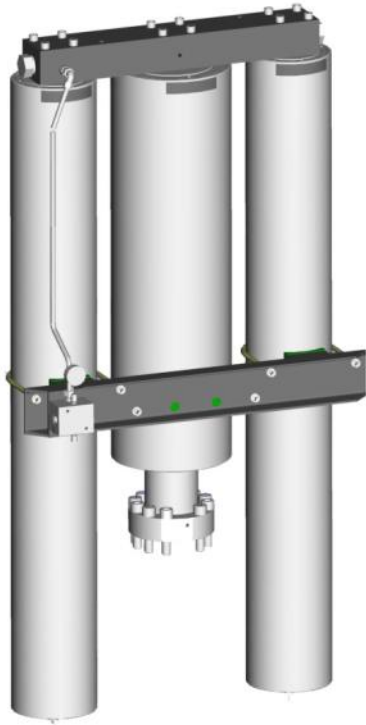
220 bar

app. (1545 x 1118 x 369) mm

app. 907 kg



BSD ACCUMULATOR UNIT BASIC DESIGN



BSD Piston Accumulator

1 x AK 80-220-36

BSD Pressure Vessel

2 x DBAK 90-220-25

design pressure

dimension (l x w x h)

weight

Oil volume: total: 80 L

Gas volume: total: 180 L

220 bar

app. (2420 x 1235 x 500) mm

app. 1590 kg



BSD ACCUMULATOR UNIT BASIC DESIGN



BSD Piston Accumulator

1 x AK 40-220-25

BSD Pressure Vessel

1 x DBAK 48-220-18

design pressure

dimension (l x w x h)

weight

Oil volume: total: 40 L

Gas volume: total: 48 L

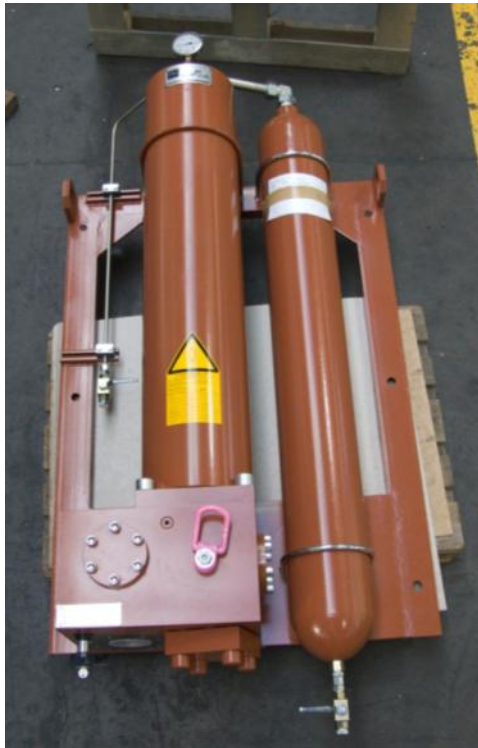
220 bar

app. (2325 x 650 x 370) mm

app. 715 kg



BSD ACCUMULATOR UNIT BASIC DESIGN



BSD Piston Accumulator

1 x AK 50-220-25

BSD Pressure Vessel

1 x DB 50-220-22

design pressure

dimension (l x w x h)

weight

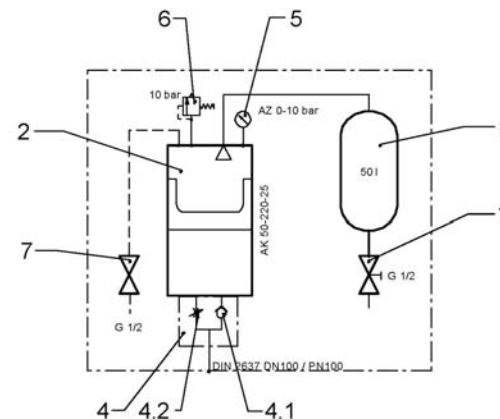
Oil volume: total: 50 L

Gas volume: total: 50 L

220 bar

app. (1500 x 1050 x 465) mm

app. 860 kg



BSD ACCUMULATOR UNIT BASIC DESIGN



BSD Piston Accumulator

6 x AK 650-350-36

Oil volume: total: 3900 L

Design pressure

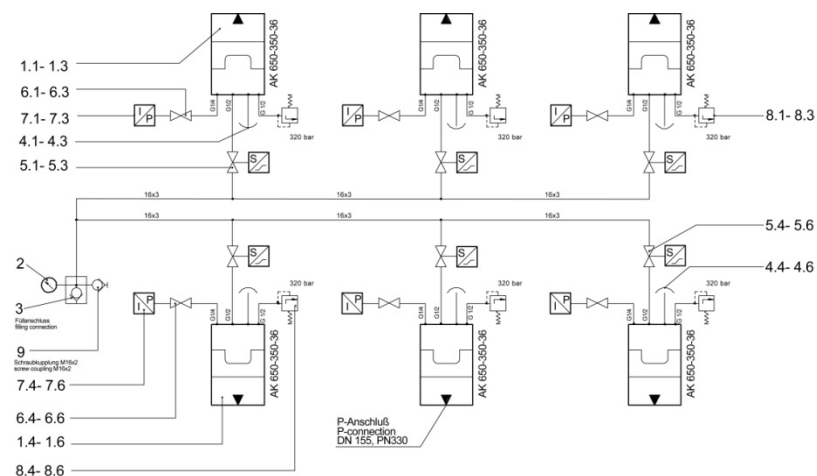
350 bar

Dimension (l x w x h)

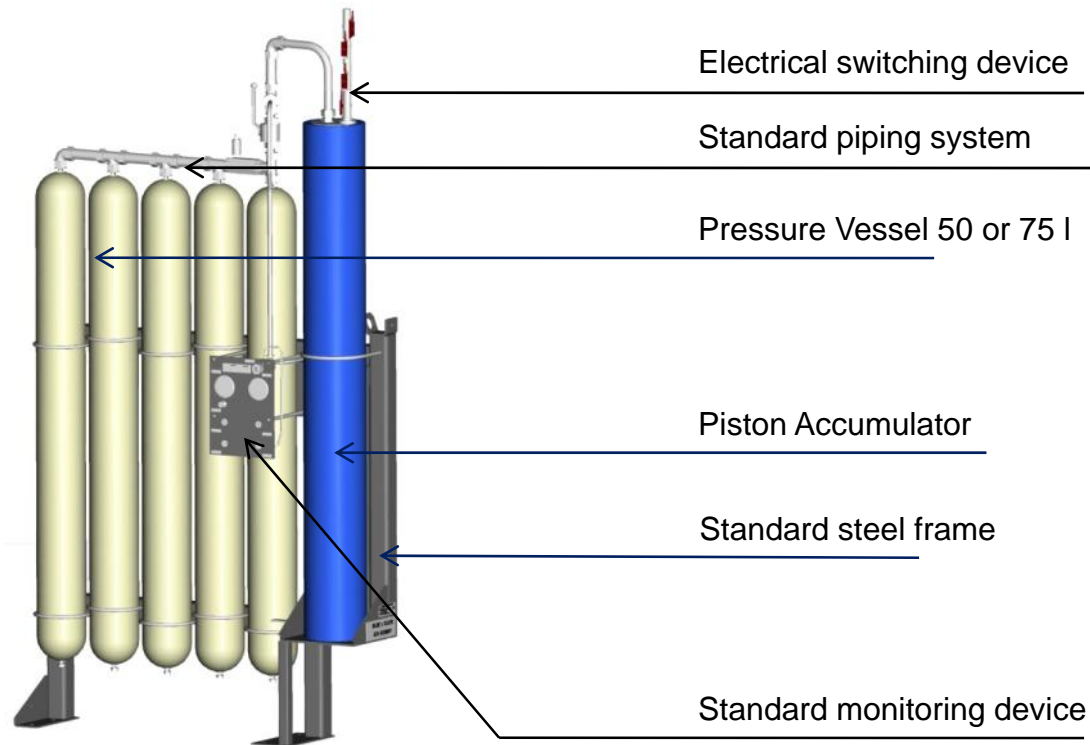
app. (7515 x 2000 x 1500) mm

Weight

app. 20150 kg



BSD ACCUMULATOR UNIT STANDARD DESIGN





BSD ACCUMULATOR UNIT STANDARD DESIGN



BSD Piston Accumulator

2 x UAK 240-51-36

BSD Pressure Vessel

46 x DB 50-51-22

Design pressure

Dimension (l x w x h)

Weight

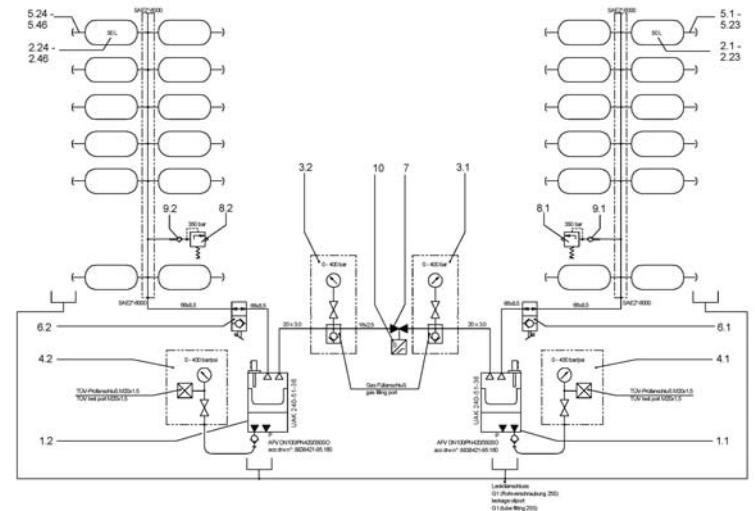
Oil volume: total: 480 L

Gas volume: total: 2300 L

5100 psi

app. (4465 x 1900 x 3880) mm

app. 13000 kg



BSD ACCUMULATOR UNIT STANDARD DESIGN



BSD Piston Accumulator

2 x AK 115-350-25

Oil volume: total: 230 L

BSD Pressure Vessel

16 x DB 75-350-25

Gas volume: total: 1200 L

design pressure

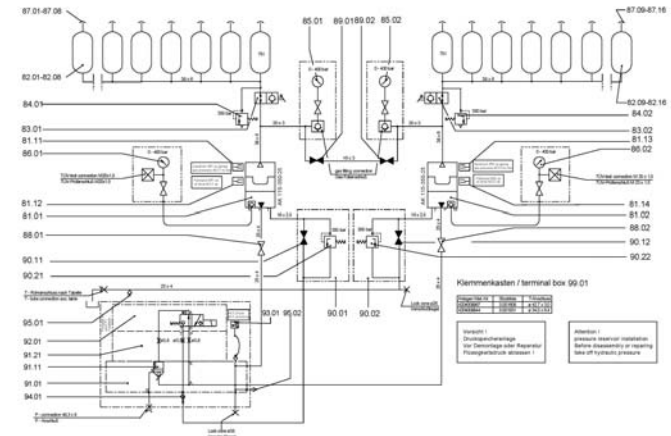
350 bar

dimension (l x w x h)

app. 2960 x 1000 x 3200) mm

weight

app. 3800 kg



BSD ACCUMULATOR UNIT STANDARD DESIGN



BSD Piston Accumulator

2 x AK 450-220-36

BSD Pressure Vessel

20 x DB 75-220-22

design pressure

dimension (l x w x h)

weight

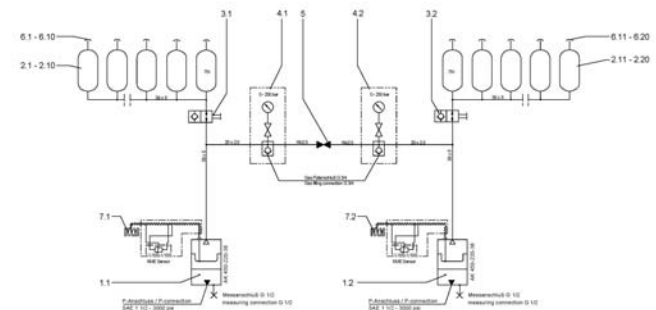
Oil volume: total: 900 L

Gas volume: total: 1500 L

220 bar

app. (2500 x 700 x 5600) mm

app. 6300 kg



BSD ACCUMULATOR UNIT STANDARD DESIGN



BSD Piston Accumulator

3 x AK 350-220-36

Oil volume: total: 1050 L

BSD Pressure Vessel

21 x DB 75-220-22

Gas volume: total: 1575 L

design pressure

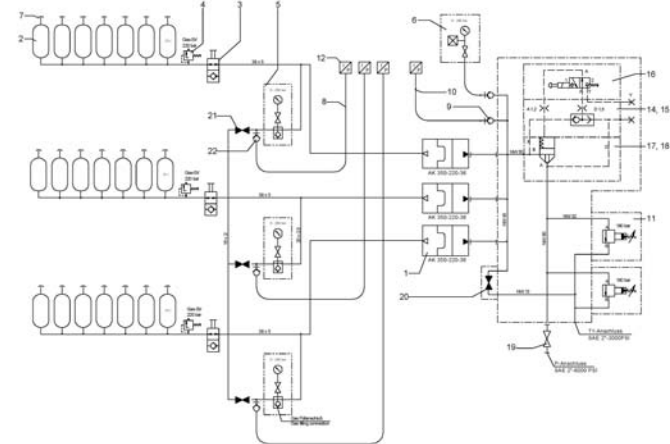
220 bar

dimension (l x w x h)

app. (4650 x 1690 x 1440) mm

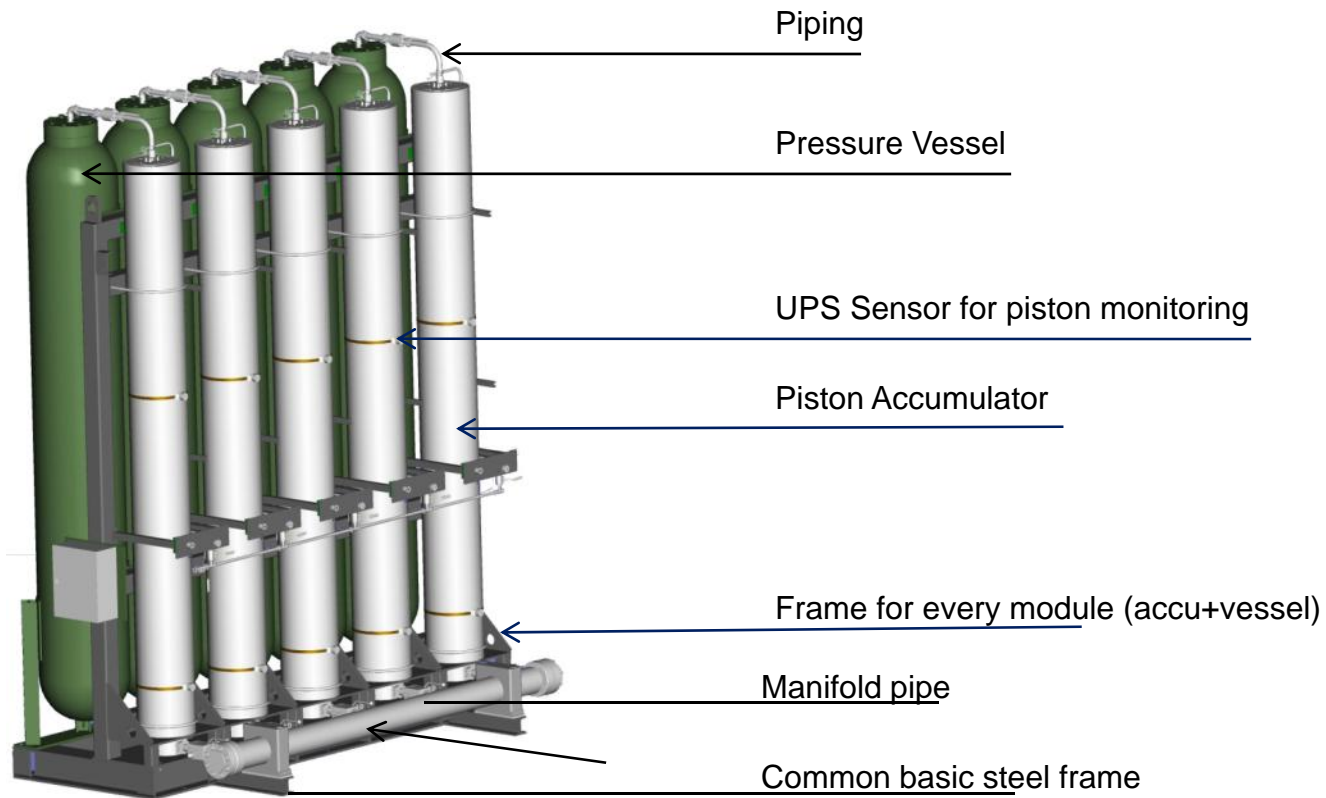
weight

app. 9000 kg





BSD ACCUMULATOR UNIT MODULAR DESIGN





BSD ACCUMULATOR UNIT MODULAR DESIGN



BSD Piston Accumulator

10 x AK 350-220-36

Oil volume: total: 3500 L

BSD Pressure Vessel

10 x DB 1050-220-60

Gas volume: total: 10500 L

design pressure

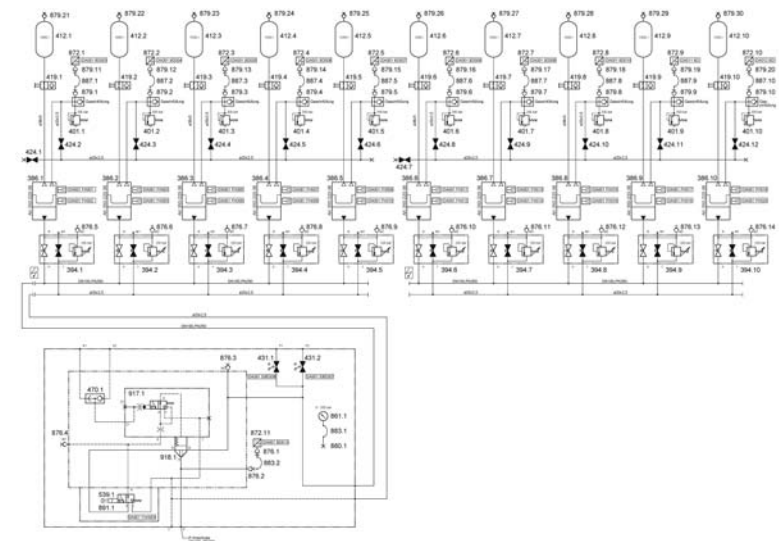
220 bar

dimension (l x w x h)

app. (4300 x 4250 x 4750) mm

weight

app. 38000 kg



BSD ACCUMULATOR UNIT MODULAR DESIGN



BSD Piston Accumulator

12 x AK 745-350-36

Oil volume: total: 8940 L

BSD Pressure Vessel

12 x DB 3600-350-80

Gas volume: total: 43200 L

design pressure

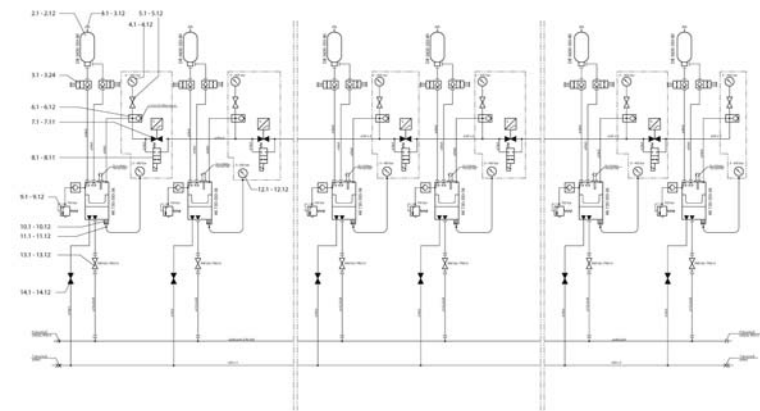
350 bar

dimension (l x w x h)

app. (14980 x 2610 x 10720) mm

weight

app. 163500 kg





BSD ACCUMULATOR UNIT MODULAR DESIGN



BSD Piston Accumulator

6 x AK 540-350-36

Oil volume: total: 3240 L

BSD Pressure Vessel

6 x AK 600-350-36

12 x DB 3200-350-70

Gas volume: total: 42000 L

design pressure

350 bar

dimension (l x w x h)

app. (11560 x 1930 x 3000) mm

weight

app. 127000 kg

